

# SAVIN®

## Pro C900s Color Production System

PRINT >

COPY >

SCAN >

FINISH >

**CAPITALIZE >**



**An unbeatable combination of speed,  
color and operational versatility.**



## Do more than ever before with one flexible system.

The SAVIN® Pro C900s is a production-class color system with the extra capabilities you need to handle every customer's needs efficiently using a single document processing solution. Depend on this productive and affordable system to deliver the superior speed, quality and versatility you need to take on a wider variety of unique and specialty jobs and capitalize on every opportunity to grow your business.



Use the intuitive control panel on the SAVIN Pro C900s to set up a diverse range of jobs, including high-volume printing with built-in scanning, copying and a wide range of inline finishing options.

### Multifaceted Document Production

The flexible capabilities of the SAVIN Pro C900s make it the ideal solution for demanding production environments that need one system to do it all. In addition to fast color printing, the SAVIN Pro C900s offers versatile scanning, copying and document storage.

- Capture originals with resolutions up to 1200 dpi for exceptionally smooth reproduction of images, text, graphics and tonal gradations.
- Integrate documents into unique workflows or distribute documents throughout the enterprise with a full array of Scan-To destinations, including e-mail, URL, FTP, SMB, mailbox, hold queue, and more.
- Save precious production time by scanning hardcopy originals directly into any TWAIN-compliant desktop application.
- Preview, modify and reprint commonly used documents without re-RIPing them by storing them on the 410 GB Document Server.
- Program complex jobs easily and monitor jobs in progress with a user-friendly 10.4-inch color touch-screen display.

## Turn Productivity Into Revenue

With its unique blend of speed, productivity and overall flexibility, the SAVIN Pro C900s helps you take on a wide variety of jobs, keep your customers happy and generate higher revenue.

- Deliver every document faster with a 90 page-per-minute print engine. This high-speed, high-volume system lets you add capacity, offload work from other systems or migrate jobs to more cost-effective technology — all of which grow revenue.
- Maintain profitability. The SAVIN Pro C900s is engineered to provide maximum uptime enabling you to consistently deliver jobs on time.
- Minimize production interruptions. The system lets you replace Toner Bottles, reload and auto-link Media Trays without stopping jobs in progress, so you can

run longer jobs with minimal operator intervention. Toner yield remains high at 72,000 prints per bottle.

## Dependable, Reliable Results

The SAVIN Pro C900s excels at consistent, high-quality color output. It is specifically designed to deliver consistent results on a wide variety of media, even in demanding production environments.

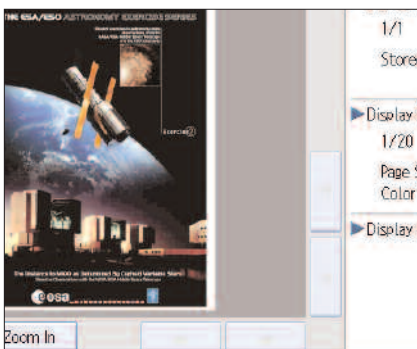
- Captivate every customer's attention with exceptional 1200 x 1200 dpi image quality. Because the SAVIN Pro C900s provides the same high resolution as higher-volume systems, it allows you to send short-run jobs to a less expensive solution.
- Deliver predictable and consistent color output throughout print runs by utilizing the SAVIN Pro C900s single direction development method.

## Outstanding Media Flexibility

Add the SAVIN Pro C900s to your production print environment and redirect an even longer list of job types to this short-run digital color system.

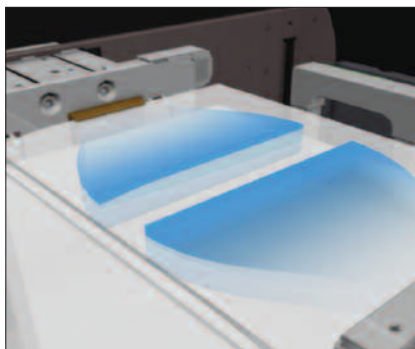
- Provide a wider range of media selection to your customers. This system lets you print or copy on a broad range of conventional and specialty stocks in sizes up to 13" x 19.2" at rated engine speed.
- Minimize operator intervention for complex or sophisticated jobs. Print drivers support advanced page programming for mixed media, enabling you to automate selection of stocks during make-ready and job submission.
- Load a mix of different-sized documents into the 100-Sheet ARDF, then hit one button and make sets for all stakeholders.

## Document Server "Preview" Mode



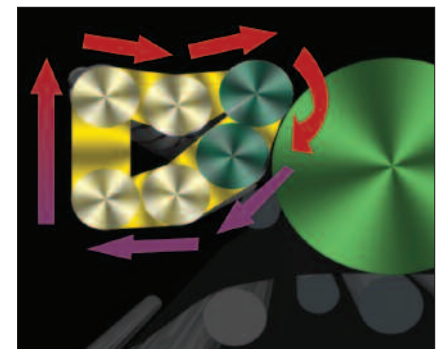
Eliminate costly errors and save time by soft-proofing print and scan jobs that reside on the Document Server. Documents can be zoomed to provide clear inspection prior to print production.

## Air-Assist Media Feed



Run more jobs that require coated media with the Air-Assist Media Feed Mechanism, which blows air between individual sheets to counteract static cling to provide reliable media feeding throughout print runs.

## Single Direction Development



Minimize color density fluctuation across printed sheets and throughout large volume print runs with Single Direction Development. This method prevents reuse of developer after toner is consumed in the development process.

# Pro C900s Color Production System

PRINT >

COPY >

SCAN >

FINISH >

CAPITALIZE >

## GB5000 Perfect Binder\*



Meet customer demand for inline perfect-bound books from 10 to 200 pages (400 pages in Duplex mode). This finisher automatically trims collated pages (three sides or one side) and applies the perfect binding without operator intervention, so you can reduce labor costs.

## SK5000 High Capacity Stacker\*



The High Capacity Stacker enables longer unattended print runs, providing up to 10,000-Sheet stacking capability when two SK5000 units are configured. Each stacker comes with a roll-away cart for transporting stacked output to offline bindery operations.

## RB5000 Ring Binder\*



The Ring Binder automates the entire binding process, so operators can prepare incoming jobs while additional jobs are being ring-bound. This helps improve productivity and reduces the risk of bottlenecks. Choose from two ring sizes for documents up to 50 or 100 sheets.

\*Please contact your SAVIN Pro C900s Sales Representative for availability.

## Convenient Inline Finishing

Choose the right finishing capabilities for a variety of specialty requirements. The SAVIN Pro C900s offers multiple options, so you can configure a system that aligns with your customers' needs.

- Create an end-to-end document finishing solution that meets your requirements for document volume, application variety, workflow tools and budget.
- Meet deadlines faster. With multiple finishing options, you can accommodate various job types in fewer steps, without spending a single minute of the production schedule on labor-intensive manual offline finishing.

## Powerful Workflow Tools

Integrated workflow solutions for the SAVIN Pro C900s provide unprecedented control over digital file processing at every stage of production.

- Establish a streamlined, uninterrupted, fully transparent process that includes Web-to-print submission, job ticketing and acceptance, pre-flight, make-ready, print production, job management, finishing, archiving/retrieval and cost accounting.
- Automate production with EFI™ Hot Folders. Files are processed automatically according to preset instructions — with no operator intervention — as soon as they are dragged into the hot folder.
- Take advantage of the growing popularity of Variable Data Printing (VDP). This system lets you implement open architecture and flexible VDP solutions to add value to documents and increase volume of customized output.

## The Total Green Solution

Savin continues its long-standing commitment to developing environmentally friendly solutions with superior energy- and supply-saving features, without compromising productivity.



## SAVIN Pro C900s

### Intuitive Operation Panel

Use the intuitive, easy-to-read Operation Panel to gain direct access to the Job Queue, the built-in Document Server and other advanced functions including the system's EFI™ Fiery® print controller.

### Trained Customer Replaceable Units

Trained Customer Replaceable Units (TCRUs) enable trained operators to replace key hardware components quickly without placing a service call.

### Easy Toner Replacement

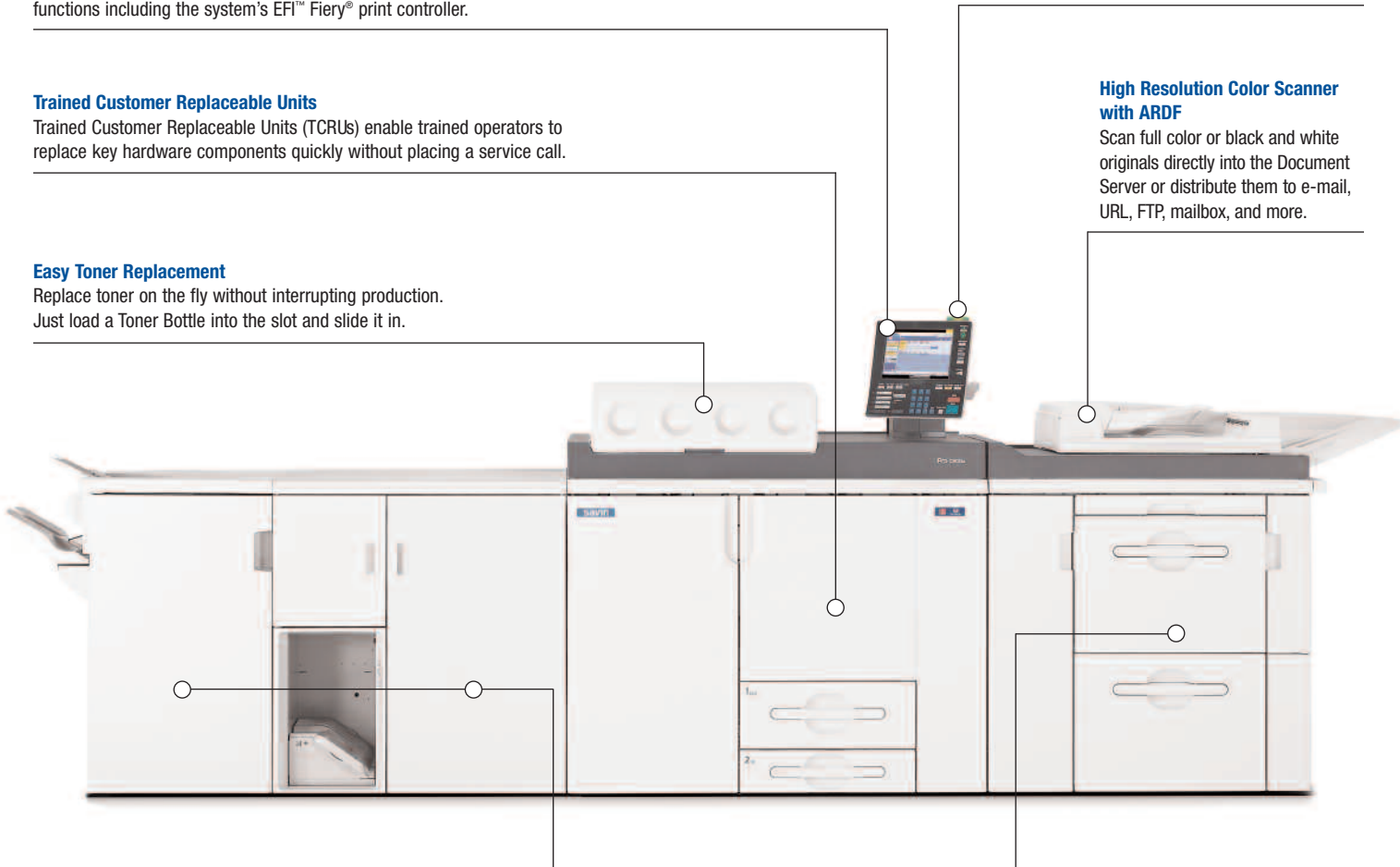
Replace toner on the fly without interrupting production. Just load a Toner Bottle into the slot and slide it in.

### Status Light

Easily check system status at-a-glance with a helpful status indicator light.

### High Resolution Color Scanner with ARDF

Scan full color or black and white originals directly into the Document Server or distribute them to e-mail, URL, FTP, mailbox, and more.



### Heavy Media Support

The SAVIN Pro C900s handles heavy media at its full rated speed of 90 pages-per-minute.

### @Remote™

Ensure accurate, timely meter reads and billing. The Savin @Remote™ diagnostic solution collects device service and error log data remotely and reports media and toner alerts.

### EFI™ Fiery® Print Controller

Attain complete control over digital file processing at every stage of production with integrated workflow utilities from EFI™ Fiery®.

### Versatile Finishing Options

The RB5000 Ring Binder and SR5000 3,000-Sheet Finishers are just two of the many options you can use to complete more jobs inline, in less time.

### Vast Media Capacity

Load the system and run it for hours without interruption. With all options, the system holds up to 11,000 input sheets and handles output up to 13,000 sheets.

### Large Capacity Tray with Air-Assist Feeding

With two trays that each hold up to 2,000 sheets, including sizes up to 13" x 19.2", the LCIT RT5020 Large Capacity Tray\* allows you to easily accommodate 11" x 17" jobs with full bleed including crop marks, registration marks and color bars.

\*One additional 13" x 19.2" LCIT 5020 can be added for a total of 8,000 sheets.

## COPIER SPECIFICATIONS

Scanning Element	3-line CCD Array
System Memory	2 GB
System HDD	640 GB
Document Feeder	Standard 100-Sheet ARDF
Copy Resolution	1200 x 1200 dpi
Image Adjustment	Automatic or manual
Quantity Indicator	Up to 9,999
Original Type	Book/sheet/object
Original Size	5.5" x 8.5" – 11" x 17"
Warm-Up Time	Less than 420 seconds
First-Copy Out Time	Less than 13.5 seconds
Speed (Memory)	90/90 cpm (BW/FC)
Speed (ARDF)	80/60 cpm (BW/FC)
Standard Media Capacity	Tray 1: 2 x 1,000-Sheet tandem Tray 2: 1 x 500-Sheet Tray 3: 2,000-Sheet (air-assist) Tray 4: 2,000-Sheet (air-assist)
Media Size	Tray 1: 8.5" x 11" (tandem) Tray 2: Up to 13" x 18" Tray 3: Up to 13" x 19.2" (air-assist) Tray 4: Up to 13" x 19.2" (air-assist)
Media Weight	Trays 1 & 2: 16 lb. Bond – 80 lb. Cover Trays 3 & 4: 16 lb. Bond – 110 lb. Cover
Magnification	7 reductions and 5 enlargements
Zoom	25% – 400% in 1% increments
Power Source	208 – 240V, 24A, 50/60 Hz, Single Phase
Dimensions (WxDxH)	102.6" x 43.3" x 55.5"
Weight	2,072.3 lbs. or less
Copier Features	Auto Magnification, Directional Magnification, Full Image Copy, Interrupt Copy, Original Type Setting, Duplex (1:1, 2:2, Book to 2-Sided, Front and Back to 2-Sided), Book/Series Combine, Margin Adjustment, Erase 3-Edge, Cover/Slip-Sheet, Chaptering, Media Designate, Image Rotation, Electronic Sort, 4-Position Staple Punch, Stamp, Image Adjustment, User Code, Interrupt Copy, Copy Counter, Counterfeit Prevention

## EFI™ FIERY® PRINT CONTROLLER SPECIFICATIONS (STANDARD)

CPU	Intel Core Duo 2.16 GHz
Memory	2 GB
HDD	500 GB (250 GB x 2)
Operating System	Windows XP
Fiery System Version	Fiery System 8.0 Release 2
PDLs	PCL5e, PCL6, Adobe PS3
Network Interface	Ethernet 1000/100/10BaseT
Network Protocols	TCP/IP (IPv4, IPv6) Apple Talk, SMB
Standard EFI Job and Color Management Utilities	EFI Driver, EFI Impose, Fiery Graphic Arts Package Standard Edition, EFI ColorWise Pro Tools, EFI Hot Folders, EFI Virtual Printers, EFI BookletMaker 3, EFI Command Workstation (PC and Mac), EFI Fiery FreeForm, PPML, Fiery VDP Resource Manager, PPML and Creo VPS Support, Push Printing, Print/Process Next, Advanced Job Re-Order, Suspend on Mismatch, Quick Doc Merge, Schedule Print, Mixed Media, Paper Catalogue, Tab Shift, Insert Tab
Optional EFI Job and Color Management Utilities	Fiery Graphic Arts Package Premium Edition, EFI Color Profiler Suite v2.2, EFI Compose Fiery Edition, ES1000 Color Spectrophotometer

## SCANNER SPECIFICATIONS (SAVIN GW CONTROLLER)

Scanning Resolutions	100/150/200/300/400/600 dpi
Scan Area	Up to 11.7" x 17"
Scan Speed	75/75 spm (BW/FC)
File Formats	TIFF and PDF (multi/single), JPEG, High Compression PDF
Mixed Size Mode	Supported
Scan-to-Destination	Scan-to-Email, Scan-to-Folder, Scan-to-URL, Scan-to-FTP, Scan-to-NCP (Novell), TWAIN Scanning
Scan-to-Email Authentication	SMTP, POP before SMTP
Resolution	200 – 600 dpi
Max. E-mail Registries	2,000 e-mail addresses, 500 groups
LDAP	Supports up to five LDAP servers
File Type	Single/Multi-Page PDF or TIFF, Single/Multi High Compression PDF

## FIERY SCANNER SPECIFICATIONS

Fiery Scan Utilities	Fiery Remote Scan, Fiery Remote Scan Plug-In (TWAIN)
Scanning Resolution	100/150/200/300/400/600 dpi
Scan Area	Up to 11.7" x 17"
Scan Speed	50/50 spm (BW/FC)
File Formats	TIFF, JPEG, PDF
Scan-To Destinations	Fiery Hold Queue, Mailbox, E-mail, FTP, Internet Fax, SMB
Fiery Scan-to-Email	Up to 1,000 in address book
Max. E-mail Registries	
Email-to-Scan Mode	Attachment or URL
Format	TIFF, JPEG, PDF
Fiery Scan to FTP/SMB	Username and password
Authentication	
Proxy Server Setup	Available
SMB Setup	Network PAS/Domain name

## DOCUMENT SERVER SPECIFICATIONS

HDD Capacity	410 GB
Max. Stored Documents	3,000*
Max. Pages per Document	Copy: 2,000* Print: 5,000* Scan: 2,000*
Max. Page Storage	12,000*

\*Maximum capacity may vary due to image coverage.

## OPTIONAL INPUT AND FINISHING ACCESSORIES

<b>LCIT RT5020 13" x 19.2" Large Capacity Tray*</b>	
Media Capacity	2 x 2,000-Sheet Trays Air-Assist
Media Size	5.5" x 8.5" – 13" x 19.2"
Media Weight	16 lb. Bond – 110 lb. Cover
*One additional LCIT RT5020 can be added; BU5000 Bridge Unit required.	
<b>BY5000 500-Sheet Multi-Bypass Tray*</b>	
Media Capacity	500 sheets
Media Size	5.5" x 8.5" – 13" x 19.2"
Media Weight	16 lb. Bond – 80 lb. Cover
*BY5000 connection requires 2nd LCIT RT5020.	
<b>CI5010 2-Tray Cover Interposer</b>	
Stack Capacity	2 x 200-sheets
Media Size	5.5" x 8.5" – 13" x 19.2"
Media Weight	17 lb. Bond – 80 lb. Cover
<b>SR5000 3,000-Sheet Finisher/Stapler</b>	
Media Size	Up to 13" x 19.2"
Media Weight	Proof Tray: 16 lb. Bond – 80 lb. Cover Shift Tray: 16 lb. Bond – 110 lb. Cover
Stack Capacity	Proof Tray: 500 sheets (8.5" x 11" or smaller) Shift Tray: 3,000 sheets (8.5" x 11" or smaller)
Staple Capacity	2 to 100 sheets: 8.5" x 11" 2 to 50 sheets: 5.5" x 11" or 11" x 17"
Staple Positions	Top, Bottom, 2-Staples, Top-Slant
Accessories	Hole Punch Unit (2/3 holes)

## BK5000 Saddle Stitch Unit

Media Size	11" x 17" SEF, 8.5" x 14" SEF, 8.5" x 11" SEF, 12" x 18" SEF
Media Weight	17 lb. Bond – 24 lb. Bond
Maximum Booklet	15 sheets/20 lb. Bond
Stacking Capacity	30 sets

## ZF4000 Z-Fold Unit

Media Size	8.5" x 11" x 14"
(Shift & Proof Tray)	11" x 17" SEF
(Staple Tray)	11" x 17"
Media Weight	17 – 20 lb. Bond

## GB5000 Perfect Bind Unit

Book Size	Width: 7.81" x 11.69" Length: 5.5" x 8.5"
Media Weight	17 lb. Bond – 110 lb. Cover
Capacity	10 – 200 sheets
Stacking Capacity	7 sets (100 sheets per set)
Cover Interposer	2 x 200-sheet trays
Inline Trimming	1-side/3-side/none
Transit Pass Unit	Type GB5000 for perfect bind*
*Transit Pass Unit Type GB5000 required.	

## BK5010 Production Level Booklet Maker\*

Maximum Booklet	30 sheets (120 pages)
Finishing Speed	Maintains 90 ppm rated engine speed
Media Size	Width: 8.1" – 12.6" Length: 10.8" – 18"
Media Weight	16 lb. Bond – 172 lb. Index**
Optional Accessories	TR5010 for face trimming BF5010 for square book folding CF5010 Cover Feeder

\*Manufactured by Plockmatic International AB.

\*\* Booklet maker supports up to 172 lb. Index in offline mode only.

## GBC StreamPunch III Punch Unit

Punch Type	Customer replaceable die sets
Media Size	8.5" x 11" LEF (punch on 11" side only)
Die Types	3-hole, 11-hole Velo Bind, 19-hole Comb Bind

21- and 32-hole Wirebind,	
32-hole Proclick,	
44-hole Color Coil	
Available on request	

## RB5000 Ring Bind Unit

Media Size	8.5" x 11"
Media Weight	17 lb. Bond – 80 lb. Cover
Number of Sheets	2 – 100 sheets
Stacking Capacity	Binding Mode: 11 sets (100 pages per set) Punching Mode: 50 sets
Ring Consumables	Ring bind element for 50 sheets Ring bind element for 100 sheets

## SK5000 High-Capacity Stacker\*

Media Size	5.5" x 8.5" – 11" x 17", up to 13" x 19.2"
Media Weight	16 lb. Bond – 110 lb. Cover
Stacking Capacity	5,000 sheets
Roll-Away Cart	One included for unloading stacks
*Up to two units can be connected.	

## ADDITIONAL ACCESSORIES

Tab Sheet Unit, Tandem Tray Converter, Optional Counter Interface, Cooling Fan for SK5000, Pass Unit for SK5000

## CONSUMABLES

CMYK Toner	72,000 page yield per bottle Based on 5% coverage
------------	--

## STANDARD UPTIME COMPONENTS

TCRU Kit	Trained Customer Replaceable Parts Maintenance components replaced by customer
@Remote	Remote diagnostics Remote troubleshooting

For maximum performance and yield, we recommend using genuine Savin parts and supplies.

### Bringing Savin Value to Your Organization

Savin technology offers a diverse portfolio of solutions to help your organization stay competitive and move ahead. Let Savin show you how to empower your business to improve critical processes, keep information secure, ensure compliance and promote environmental sustainability while reducing the total cost of ownership.

Savin Five Dedrick Place, West Caldwell, NJ 07006

SAVIN® is a registered trademark of Ricoh Americas Corporation. All other trademarks are the property of their respective owners. Print speed may be affected by network, application or PC performance. Specifications and external appearances are subject to change without notice. Products are shown with optional features.  
The SAVIN Pro C900s is not Energy Star compliant.